



2025 EDITION

Annual Graduate **FASHION SHOW**

Creating Legacy from Disruption



UNIVERSITY OF EDUCATION, WINNEBA.
DEPARTMENT OF TEXTILES AND FASHION EDUCATION.
7TH ANNUAL GRADUATE FASHION SHOW, 2025

CONTENT

Acknowledgment	i
Editorial Team	ii
Dedication	iii
Foreword	iv
Editors Letter	v – vi
History of the Department	vii
Meet our Staffs	viii
Introduction	ix – xi

Runway Showcase

GROUP 1:	NEUX	2 – 3
GROUP 2:	FURIOSA	4 – 5
GROUP 3:	GLOBAL NOMAD	6 – 7
GROUP 4:	NATURE'S ELEGANCE	8 – 9
GROUP 5:	ETHEREAL ENCHANTMENT	10 – 11
GROUP 6:	ENCHANTING NATURE	12 – 13
GROUP 7:	DUALITY	14 – 15
GROUP 8:	HONEYDEW HAVEN	16 – 17
GROUP 9:	ROSES AND PEARLS	18 – 19
GROUP 10:	ANCESTRAL MANUMIT	20 – 21



GROUP 11:	TAWNY TEMPTATION	22 - 23
GROUP 12:	ELEMENTAL WILDERNESS	24 - 25
GROUP 13:	ARCTORIS (RAINBOW)	26 - 27
GROUP 14:	IRIDESCENCE	28 - 29
GROUP 15:	NATURE'S DIVERSITY	30 - 31
GROUP 16:	BEADED BLAZE	32 - 33
GROUP 17:	TIDAL DENIM	34 - 35
GROUP 18:	DIVULGENCE	36 - 37
GROUP 19:	SEDUCTIVE PLUMAGE	38 - 39
GROUP 20:	COSMIC ODYSSEY	40 - 41
GROUP 21:	OCEAN ABYSS	42 - 43
GROUP 22:	VIBRANT HOPE AND WHIMZY	44 - 45
GROUP 23:	NIGHT OF SHELLS	46 - 47
GROUP 24:	OCEAN OASIS	48 - 49
GROUP 25:	ENCHANTED CLOUDS	50 - 51
GROUP 26:	ELEMENTAL OASIS	52 - 53
GROUP 27:	URBAN REVIVAL	54 - 55

ACKNOWLEDGEMENTS

We wish to express our sincere gratitude to the Vice-Chancellor, Prof. Stephen Jobson Mitchell, management of the University, Dean of School of Creative Arts, Prof Emmanuel Obed Acquah, Dr. Emmanuel Abban, Head of the Department of Textiles and Fashion Education, and all department staff. A special thanks to Mr. Daniel Ato Adubah, Mr. Edward Buxton, and their crew for their exceptional stage design and construction. We are profoundly grateful to Professor Osuanyi Quaicoo Essel, Chairperson of the 2025 Graduate Fashion Show, whose leadership and guidance were instrumental in inspiring the production of this year's magazine and the success of the event itself. To our models, makeup artists, hairstylists, technical crew, DJ, ushers, and the Fashion Show Committee led by Class Representative Abena Duoduwaa Dodd. Finally, we extend our thanks to all the individuals and groups whose invaluable contributions made this fashion show a resounding success.

EDITORIAL TEAM

Benedicta Damalie, **Editor-in-Chief**

Ahadjie Korbla Gershon, **Assistant Editor**

Ama Asamoah

Isaiah Nartey

Thomas Agyemah

Judith Acquah

Deborah

Graphics Editor

Mr. Henry Okai Aryeetey

Design and Layout

Mr. Divine Cherubin Amable

Director of Photography

Sampa

Jameel Abdul-Rahman

DEDICATION

We are proud to dedicate this edition to TEXFA,
the Textile and Fashion Association at the University of Education, Winneba.

FOREWORD

In the evolving landscape of fashion, the writer's stylus is as essential as the designer's needle. Fashion writers perform more than merely enlighten; they contextualise, critique, and narrate, transforming creative insights into engaging narratives for a broad audience. Through a combination of imagery and prose, they delineate the industry's development, capturing its history, critically examining its current state, and envisioning its future. This practice of fashion journalism is therefore not merely supplementary; it is a vital pillar that enhances the cultural discourse and plays a substantial role in the creative economy.

However, within Ghana's expanding fashion industry, a significant void remains: the lack of structured education in fashion journalism. This deficiency restricts the profundity of critical discourse within our media and constrains the narrative capacity of our industry. It was this very challenge that motivated me to establish an extracurricular, pro bono mentorship program for interested students from the Department of Textiles and Fashion Education. My objective was to provide them with the fundamental skills of the craft, cultivating a new generation of voices prepared to narrate our distinctive fashion stories.

This second edition of the TEXFA magazine serves as a dynamic testament to their growing expertise. Primarily showcasing highlights from the 2025 Graduate Fashion Show, these pages exemplify their dedication. The students have not only internalised fundamental principles but have also exhibited exceptional creativity and a sincere enthusiasm for engaging with fashion as a form of narrative art. Their work herein provides a persuasive justification for the formal establishment of a fashion journalism program at our university.

Ultimately, although this magazine honours the potential of our writers, its essence is driven by the extraordinary artistry of our graduating class. We honour the graduates of Textiles and Fashion Education whose collections are documented here, the creators of form and narrative. They are the fundamental reason for their existence. With expertise in both design and construction, they have transformed self-created fabrics into compelling expressions of identity and cultural heritage. As you engage with these pages, may you not only observe their talent but genuinely perceive it. We commend these visionary designers and the promising futures they are poised to create.

Professor Osuanyi Quaicoo Essel, PhD.

Patron, Fashion Writers

EDITOR'S LETTER

A Note from the Chief Editor

To our cherished readers,

This edition of TEXFA is dedicated with immense pride to the graduating fashion and textile designers of the Class of 2025. In a world often defined by the tension between the new and the old, these visionary creators have masterfully bridged the chasm between disruption and legacy. They have not merely designed; they have orchestrated a dialogue where audacious concepts meet timeless technique, proving that the future of fashion is built upon a profound respect for its past.

Through a rigorous journey of conceptualization, illustration, and purposeful construction, these graduates have performed a remarkable act of alchemy. They have taken disruptive, often unexpected materials and transformed them into meaningful expressions of personal identity and rich cultural heritage. Each stitch, fold, and texture tells a story, a narrative that challenges conventions while honouring the threads of history that bind us. This collection is more than clothing; it is a curated gallery of wearable art, born from both relentless innovation and deep introspection.

Of course, such profound work is never a solitary endeavour. This milestone is a celebration of the collective spirit that fuels creativity. We extend our deepest gratitude to the selfless lecturers and mentors who provided guidance, the skilled technicians who shared their wisdom, the fellow creatives who offered collaboration, and every individual who believed in these designers when they were only dreaming. This issue stands as a testament to that village of support.

As you turn these pages, we invite you to engage in more than just passive viewing. Immerse yourself in the incisive visual narratives and allow yourself to be moved by the artistry on display. Witness the birth of a new generation of design leaders. And when a piece resonates with you, when you see a vision that aligns with your own aesthetic, we encourage you to reach out. Patronize their nascent talent, commission their work, and become a part of their ongoing story. For in supporting them today, you are investing in the enduring spirit of design for all our tomorrows.

With anticipation,

Benedicta Demalie, Chief Editor, TEXFA Magazine



A Brief History of the Department of Textiles and Fashion Education

The Department of Textiles and Fashion Education was conceived within the innovative ecosystem of the Department of Art Education, where the Bachelor of Arts (Fashion and Textiles Education) programme was first launched in 2015. From its inception, the programme demonstrated remarkable vitality, witnessing an appreciable growth in enrolment. This surge was directly linked to its compelling value proposition: the creation of readily marketable products and the promise of self-employment. In an era of mounting graduate unemployment, a curriculum designed to cultivate entrepreneurs, not just employees, resonated deeply with the youth, positioning the programme as a timely and strategic response to a national challenge.

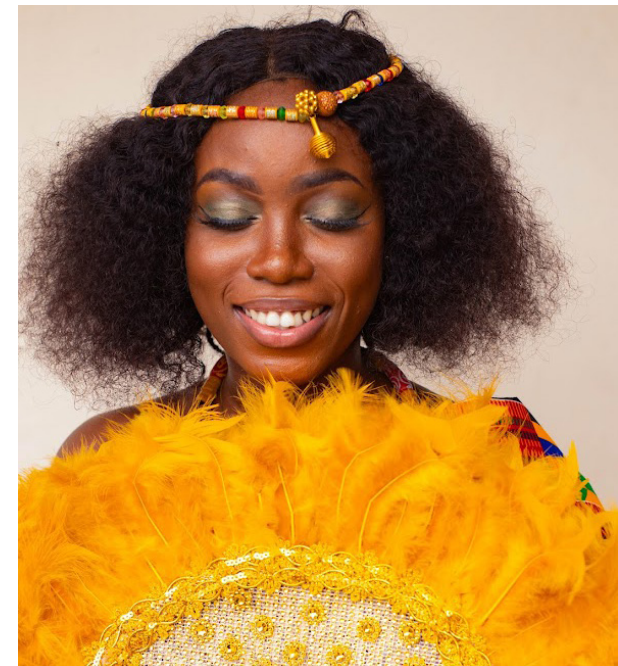
Recognizing this potent potential and aligning with the University's strategic mandate to absorb Free SHS graduates, the programme underwent a significant institutional evolution. On April 2020, it was weaned from its parent department and established as the full-fledged Department of Textiles and Fashion Education. This pivotal transition was not merely administrative; it was a strategic move to appropriately position us as a centre of excellence, capable of attracting the nation's most creative young minds and empowering them to become leaders in the field.

Our department occupies a unique and critical niche in Ghana's educational landscape. While the study of fashion and textiles has become a household name, the University of Education, Winneba remains the sole institution offering a composite programme that seamlessly integrates Education with Textiles and Fashion Design. This distinct philosophy positions us as the premier trainer of trainers, producing graduates who are not only masterful practitioners but also skilled educators, equipped to shape the next generation of talent as textile and fashion educators, designers, stylists, makeup artists, and cosmetic artists.

The capabilities of our graduates are most vividly illustrated in our graduate exhibitions.

What makes our shows uniquely enviable is the comprehensive skill set on display, our graduates are artists of the entire process. They creatively design and print their own fabrics, often infusing them with Afrocentric motifs, and then masterfully convert these original textiles into compelling, arty garments. By bridging the gap between textile creation and fashion construction within a single training programme, we equip our graduates with an unparalleled competitive edge, ready to serve discerning clients with end-to-end expertise.

Our 2025 graduate fashion show, therefore, stands as a triple celebration: it is a testament to the creativity and readiness of our graduates; it is validation of the University's practical contribution to reducing graduate unemployment; and it is a promise of the diverse entrepreneurial pathways, from cosmetics production to fashion accessories, that our programme unlocks. As we look to the future, the Department is committed to expanding these frontiers, continually innovating to ensure our graduates remain at the forefront of the global creative industries.





MEET OUR STAFF

Emmanuel Abban, PhD., Head of Department

Philomina Obu, PhD., Examination Officer

Isaac Aboagye, PhD., Graduate Coordinator

Emmanuel Kodwo Amissah, PhD., Assoc. Prof.

Osuanyi Quaicoo Essel, PhD., Prof. & Vice-Dean, SCA

Edward Buxton, Lecturer

Daniel Ato Adubah, Lecturer

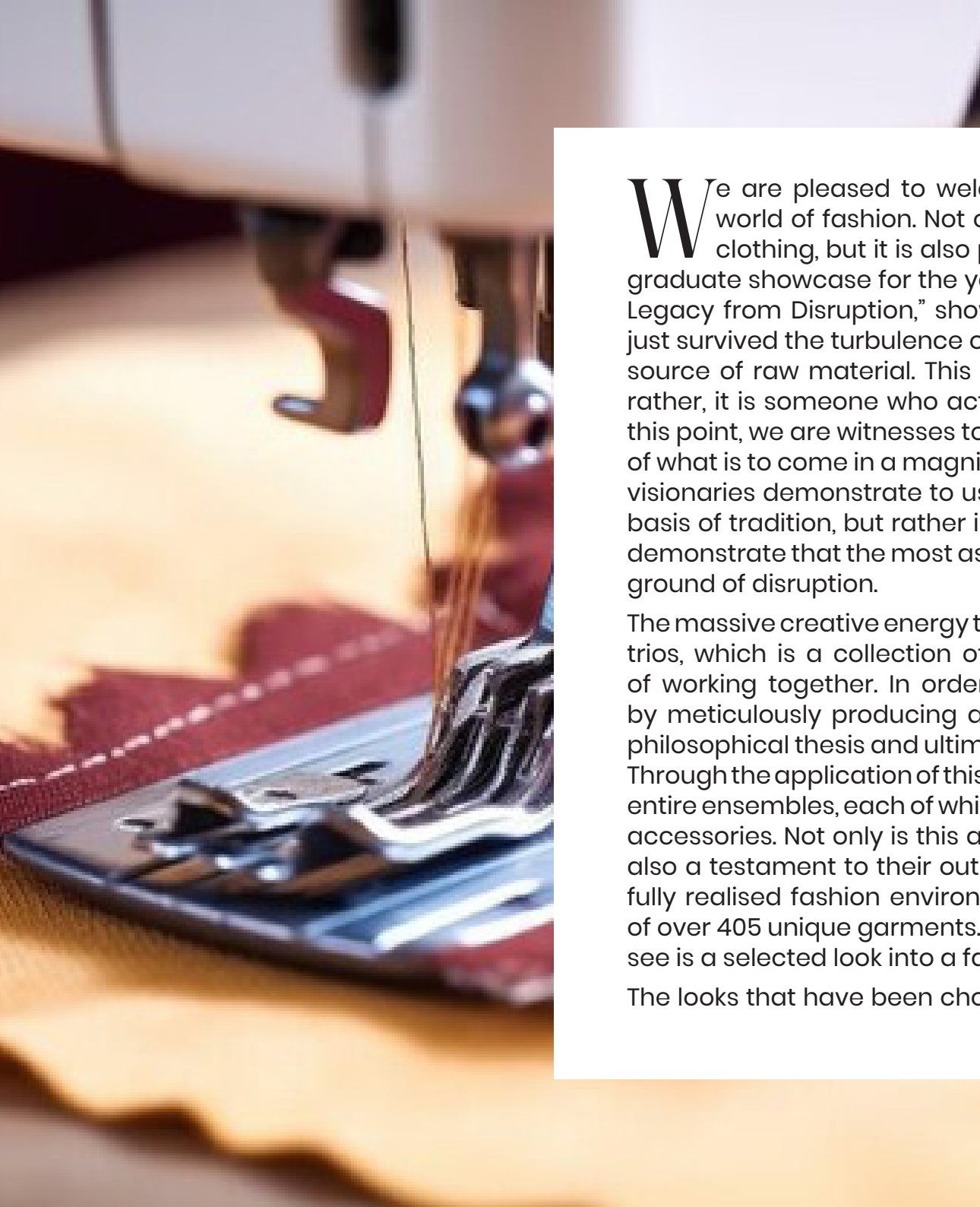
Linda Arthur, Department Administrator

Esther Baah, Studio Technician & Makeup Artist



An aerial photograph of the University of Education, Winneba campus. The image shows a large, modern white building with a glass facade, surrounded by lush green trees and palm trees. A wide road runs through the center of the campus, flanked by green lawns and more palm trees. In the foreground, a red banner with the word "INTRODUCTION" in white capital letters is superimposed over the image. The background shows a hilly area with more buildings and trees.

INTRODUCTION



We are pleased to welcome you to the beginning of a new era in the world of fashion. Not only is the stage prepared for the presentation of clothing, but it is also prepared for the presentation of a manifesto. The graduate showcase for the year 2025, which is appropriately named “Creating Legacy from Disruption,” showcases a generation of designers that have not just survived the turbulence of our times but have also used it as their principal source of raw material. This is not someone who merely observes the world; rather, it is someone who actively and courageously reimagines the world. At this point, we are witnesses to the demise of outdated paradigms and the birth of what is to come in a magnificent and unapologetic manner. These emerging visionaries demonstrate to us that a real legacy is not constructed just on the basis of tradition, but rather is formed in the blazing furnace of invention. They demonstrate that the most astounding beauty can and will arise from the fertile ground of disruption.

The massive creative energy that is driving this show is the product of 27 different trios, which is a collection of 81 designers that have perfected the alchemy of working together. In order to get started on this trip, every group began by meticulously producing a moldboard, which served as both a visual and philosophical thesis and ultimately became the guiding light for their collection. Through the application of this fundamental idea, they were able to create fifteen entire ensembles, each of which was accompanied by its own set of customised accessories. Not only is this a monument to their limitless imagination, but it is also a testament to their outstanding discipline, technical skill, and grasp of a fully realised fashion environment. This represents an astonishing production of over 405 unique garments. Because of this, the runway that you are about to see is a selected look into a far bigger world of opportunities and concepts.

The looks that have been chosen for this presentation are the most significant

accomplishments of this process. These are the looks that most effectively convey the disruptive ideals of their designers. Armoured elegance that is created from social fissures, flowing shapes that are born from digital disintegration, and materials that are intertwined with tales of rebirth are all things that you will witness throughout the collection. Every single thread, every single drape, and every single built form is a proclamation of my intentions. These collections are not exercises for students; rather, they are sophisticated collections of professional calibre that speak the language of modern luxury, avant-garde expression, and wearable art with a level of fluency that is stunning.

Let it be known that you are not only a member of the audience but rather a witness to the future of our industry as you watch this procession of the symbols of the future make their way around the stage. It is a direct challenge to the existing quo and a promise of great talent that is poised to flood the global fashion scene with fresh vitality. The impressiveness that is on exhibit here is a direct challenge to the current quo. These designers are ready to meet your most ambitious creative demands, and they are eager to offer their one-of-a-kind combination of conceptual rigour and technical skill to ateliers, homes, and businesses all around the world. Not only do we encourage you to congratulate them on their accomplishment, but we also strongly urge you to acknowledge the enormous worth that they represent. In the evening, show your appreciation for their skill, work along with their vision, and make an investment in the legacy they are beginning to build.

The background image shows a fashion runway stage. A bright red carpet leads from the bottom center towards a red door at the far end of the stage. The door is set within a white, classical-style architectural frame. On either side of the carpet, rows of white, modern-style chairs are arranged, facing the stage. The ceiling is dark with recessed lighting. The overall atmosphere is clean, modern, and professional.

Runway Showcase

This section unveils the culminating collections from our 2025 Fashion and Textiles graduating class. These works represent the collaborative vision of twenty-seven groups, each comprising three designers. We invite you to enjoy an insightful viewing of their innovative concepts. Each group's thematic direction is presented, followed by their respective collections.



Nexus

Where nature's genius meets human artistry. Inspired by the silken geometry of spider webs and the precise order of beehives, this collection explores the universal power of structure and connection. Each piece is a testament to the strength found in unity, a dialogue between the organic and the architectural. Through form, texture, and line, Nexus celebrates the beautiful bond between body and garment, the individual and the collective, art and engineering.

DESIGNERS



Sandra Duah Boateng

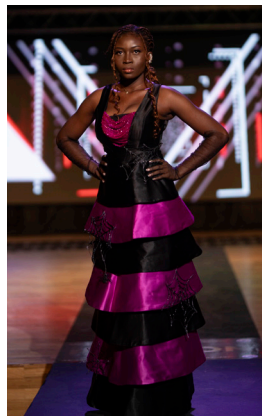
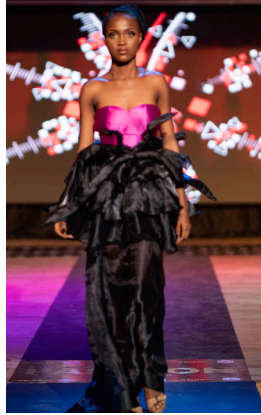


Elizabeth K. Appiah



Jennifer Mawusi Asare

EXUS





Furiosa

Is a testament to fashion as survival. This collection merges post-apocalyptic grit with avant-garde construction, where every garment serves as both armor and a declaration. Inspired by the unyielding spirit of its namesake, the designs are stripped to their primal purpose: protection, power, and presence. Aesthetic contradictions define the pieces, brutal yet beautiful, distressed yet refined.

Foundational materials like scarred leather, oil-washed canvas, and scorched denim are crafted with intentional imperfection. Frayed seams, exposed stitching, and asymmetrical drapes speak to a narrative of resilience, of beauty forged from ruin. Metallic elements, inspired by prosthetics, are molded into structural sleeves and gauntlets, transforming trauma into triumph. Functional harnesses, utility belts, and repurposed industrial hardware replace traditional embellishments.

Silhouettes oscillate between sculpted, body-conscious suits and oversized, deconstructed coats, creating a constant tension between vulnerability and dominance.

DESIGNERS



Martha Asiedu - Amofa



Jonathan A. Aklamanu



Grace Osei - Duah

SOI





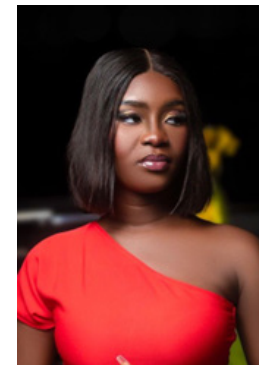
Global Nomad

Redefines modern sophistication, transforming the traditional suit into a canvas for art and innovation. Born from a spirit of travel and cultural fusion, the collection celebrates individuality and freedom. Each piece merges classic tailoring with avant-garde details, featuring vibrant colours inspired by global landscapes and experimental elements like hand-applied beading and translucent layers. For the cosmopolitan soul, GLOBAL NOMAD is more than clothing, it's wearable art for a life without borders.

DESIGNERS



Arthur Clement



Davina Apea
Kuffour Boatemaa



Andrew Aduteye

Global Nomad

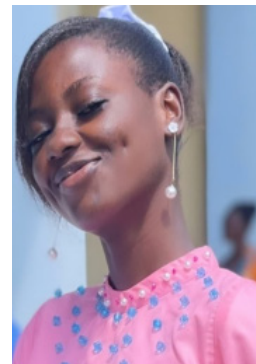




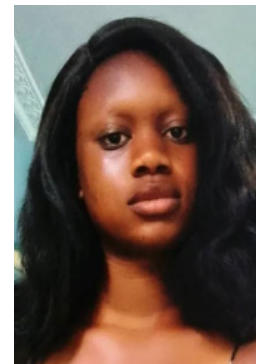
Nature's Elegance

Is a masterpiece of refined beauty, where delicate petals unfurl beside towering peaks, and every detail tells a story of timeless harmony. In its gentle streams and vast oceans, in the soft sigh of leaves and the mighty roar of thunder, nature whispers secrets of awe and wonder, revealing an intricate, perfect balance. As sunrises ignite the sky and starry nights gleam with celestial magic, nature's elegance inspires, revitalizes, and connects us to the essence of life, fostering a profound appreciation for the world that surrounds and sustains us.

DESIGNERS



Jubin Eunice Serwaa

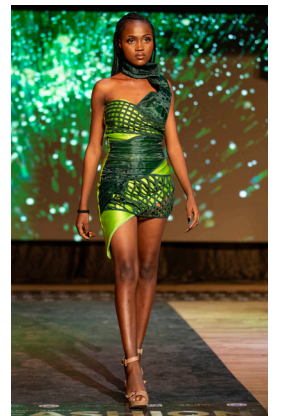
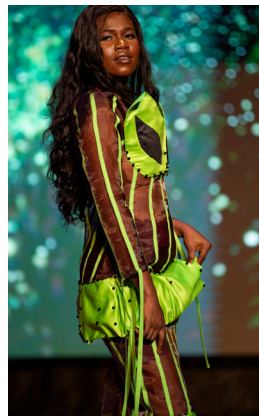
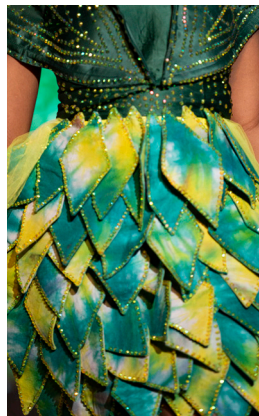
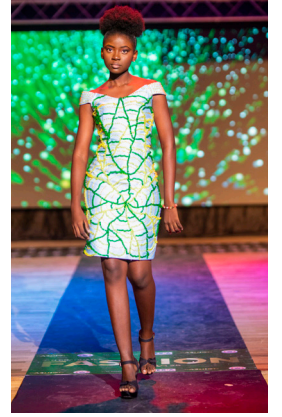


Paulina Johnson Ankrah



Celestina Tofah

Nature's Palette





Ethereal Enchantment

Redefines bridesmaid fashion, merging timeless elegance with a mystical, otherworldly allure. Inspired by crystal formations, liquid metal, and botanicals, the collection features versatile silhouettes from sleek V-neck and strapless gowns to flowing midi dresses adorned with floral details. Crafted from luxurious satin, lace, and organza, each design is elevated with crystal-inspired embellishments.

The palette spans soft pastels to rich, nature-inspired hues of peach, purple, green, and brown. Celebrating individuality, Ethereal enchantment empowers every woman to feel both ethereal and iconic, creating a look as unforgettable as the moment itself.

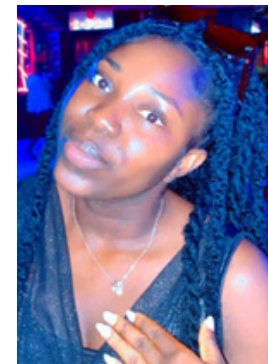
DESIGNERS



Adutwumwaa Jemima

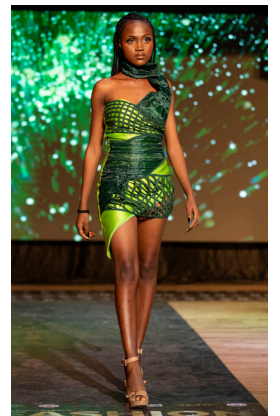
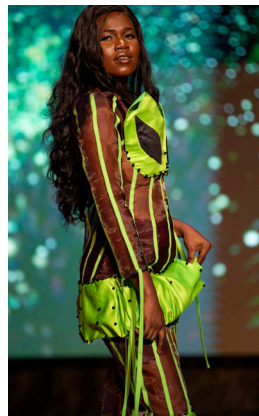
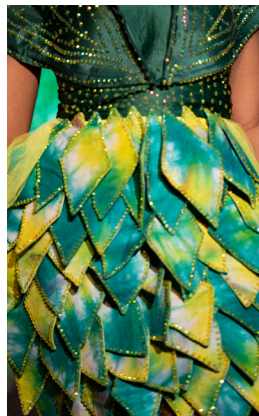
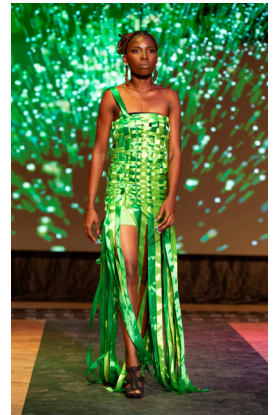


Bernard Obeng



Alice A. Arthur

Ethereal Calm





Enchanting Nature

Let nature be your ultimate muse. Adorn yourself with its enchanting patterns, earthy palette, and sustainable fabrics. This is a style that does more than look beautiful, it honors the planet. Embrace the magic of the wild and let it radiate from within.

DESIGNERS



Owusu Lucy

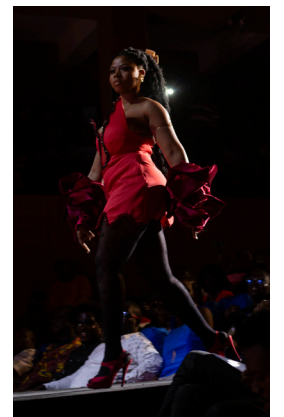
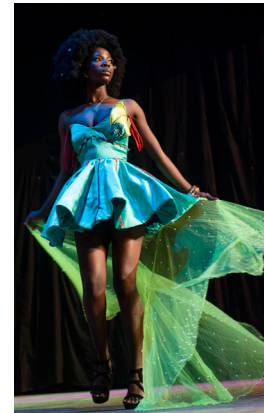
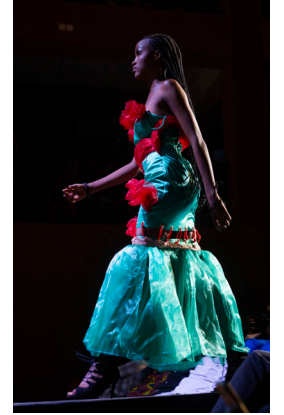
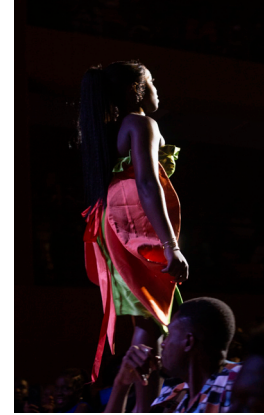
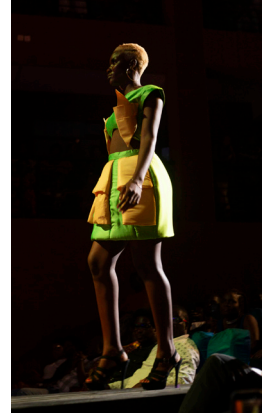


Mabel Selase



Nora Asinu

Enchanting Fall

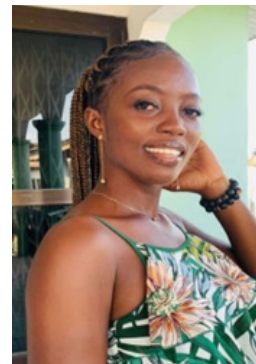




Duality

Is a fashion concept exploring the mystical balance between light and shadow. Inspired by the ethereal elegance of fairies and the bold mystique of witches, this collection celebrates the contrast between the soft and the strong. Flowing silks, shimmering textures, and pastel hues converge with structured silhouettes, rich velvets, and deep, moody tones. Duality invites the wearer to embrace both their light and shadow selves, capturing the timeless magic of the fae and the fierce allure of the witch in a single, enchanting form.

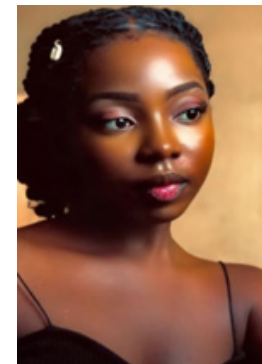
DESIGNERS



Moreen Pinamang Barnie

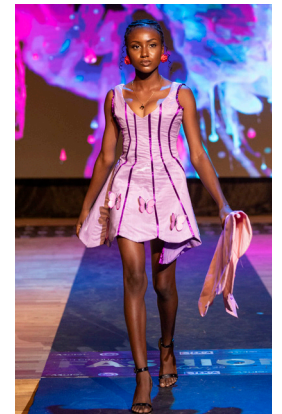
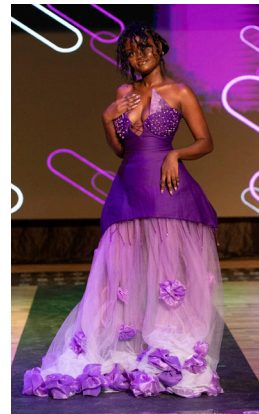
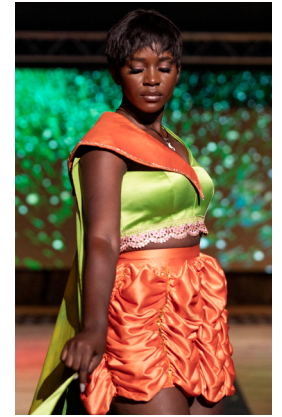
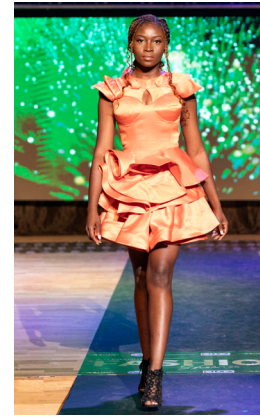


Mavis Ohene
Maame Dede



Nana Ama
Benimaah Andam

Digital





Honeydew Haven

Where nature's nectar meets effortless elegance. Inspired by the serene hue and refreshing essence of the honeydew melon, this collection is a sanctuary of calm and quiet luxury. Discover soothing pastels, smooth textures, and airy silhouettes that evoke the fruit's juicy freshness from gentle curves and translucent layers to a delicate, dew-kissed shine. Each piece is a dreamy escape, offering a style that is both revitalizing and refined.

DESIGNERS

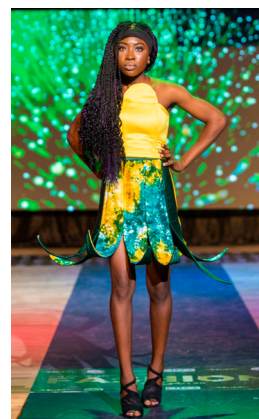


Angela Obeng



Adwoa Agyeiwaa

Honeydew Haven





Roses and Pearls

This collection explores the delicate balance between the passionate, vibrant beauty of the rose and the serene, timeless elegance of the pearl. The rose brings an organic sensuality, symbolizing romance and profound love. The pearl offers a quiet sophistication, representing understated luxury.

We merge these two powerful symbols to create a look that speaks softly yet leaves a lasting impression. Each piece is crafted to embody the blossoming beauty of a rose and the enduring legacy of a pearl, a fusion that is deeply feminine yet powerful, capturing the essence of a woman who is both beautifully expressive and eternally classic.

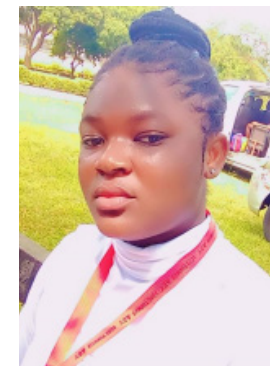
DESIGNERS



Hadiza Mohammed

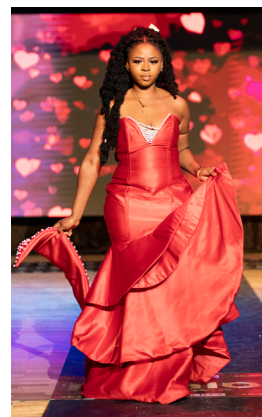
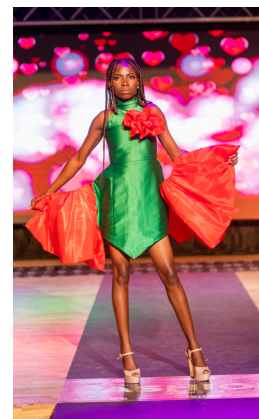


Precious Sedinam Obum



Emelia Ekpaha Mensah

Roses and Peals





Ancestral Manumit

Reimagines heritage for the modern world. Our collection, “The Urban Jungle,” is a sartorial celebration of Ghana, transforming ancestral craftsmanship into a daring, contemporary vision. Each design is inspired by one of Ghana’s 16 regions, fusing distinct cultural and ecological narratives with futuristic urban elements. We explore the dialogue between nature and the metropolis: earth-toned fabrics mimic tree bark, while metallic accents echo city grids.

Corsets evoke skyscraper silhouettes, traditional beadwork is interlaced with reflective materials, and structured sleeves recall architectural forms. This is more than fashion; it is a testament to our roots, redefined for the future.

DESIGNERS



Florence Owusu
Boatema

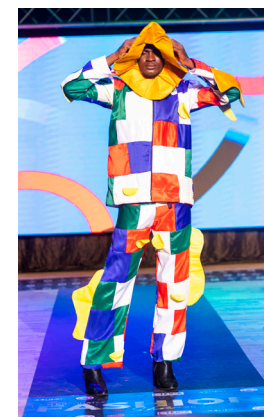
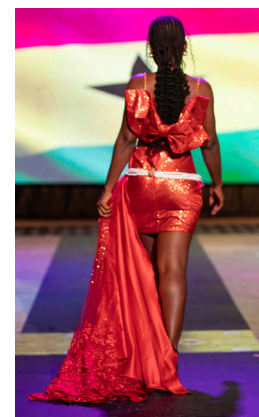
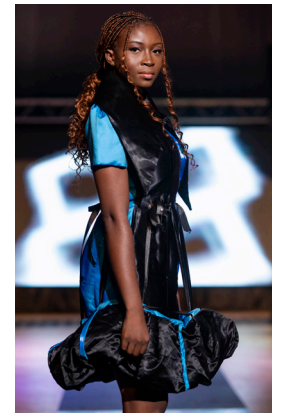
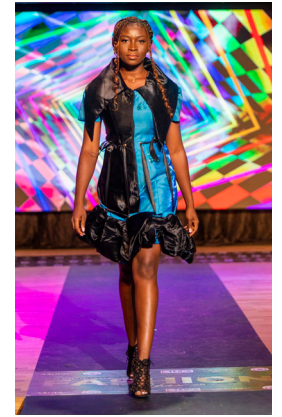
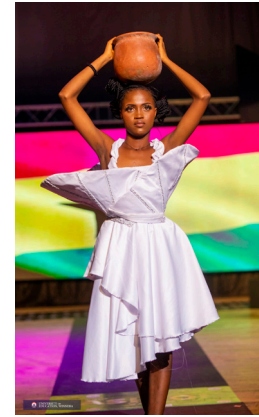


Francisca Asamoah



Nana Aba Andzie

Ancestral • Valumi





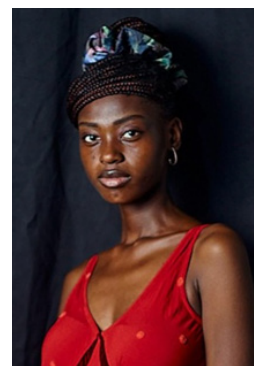
Tawny Temptation

Is a celebration of audacious elegance. It's where the warmth of burnt sienna and golden amber meets fearless self-possession. Each piece is a statement of power and sensuality, crafted from silhouettes that glide over the body and fabrics that flow with a whisper. For those who rule in confidence.

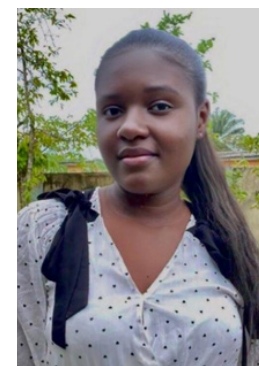
DESIGNERS



Ruth Hayibor



Miriam Ebela



Cindy Amankwatia

Tawny Collection

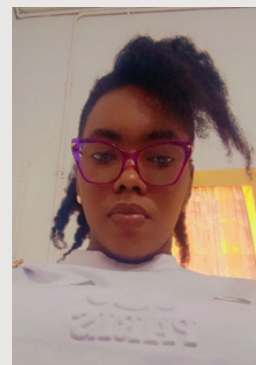




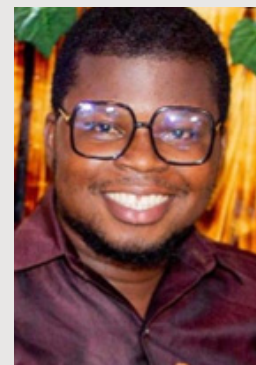
Elemental Wilderness

Transcends mere imitation of nature. It is the art of distilling the raw power and inherent elegance of the wild into wearable form. This is for those who find strength in solitude, peace in the storm, and their truest expression in the untamed beauty of the earth.

DESIGNERS



Abigail A. Amoako Hema

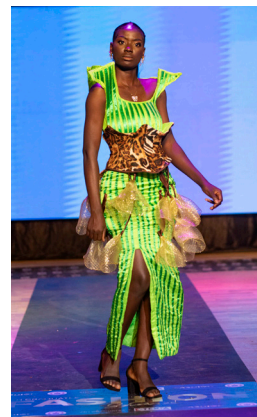
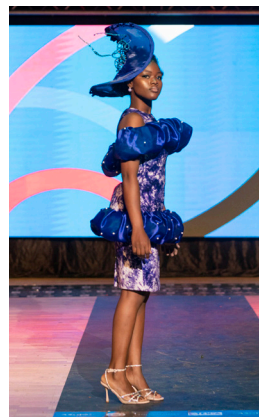
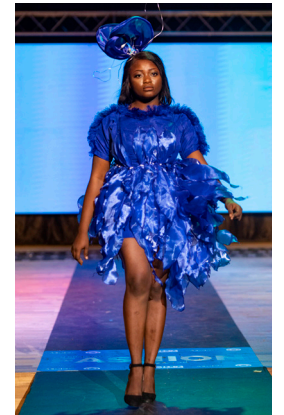
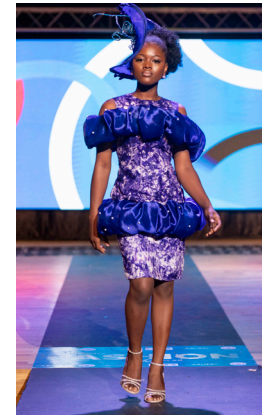
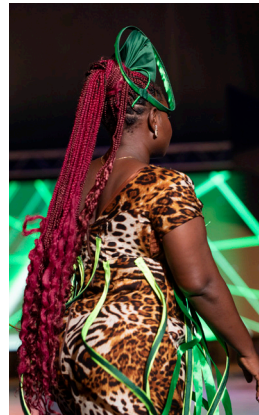
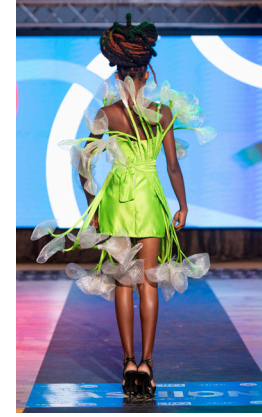


Anthony Atta-France



Bernice Ofosu

Vital Elements





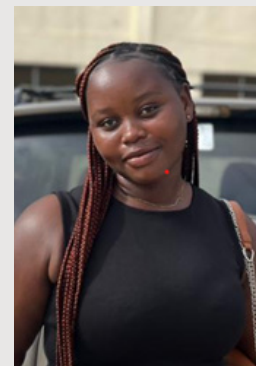
Arctoris (Rainbow)

The celestial canvas of Arctoris paints a vibrant bridge between heaven and earth. More than a spectrum of light, it embodies hope, celebrates diversity, and serves as a divine promise of calm after chaos, reminding us that profound beauty is always present.

DESIGNERS



Araba Bartels Mensah

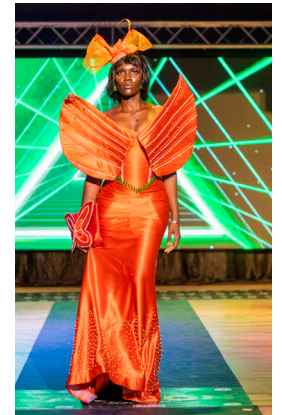
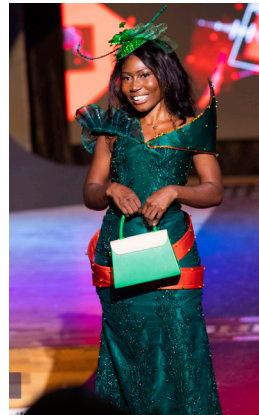
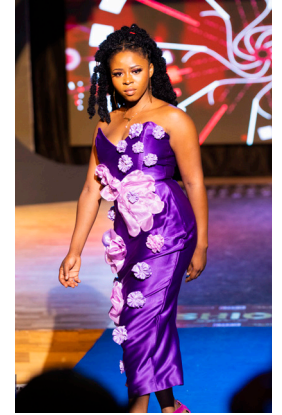


Nana Aba Anoa Bentum



Cathrine Ankamah

Arctois





Iridescence

A concept where delicate, ethereal beauty intersects with optical illusion. Iridescence is the phenomenon where surfaces appear to shift in color, shimmer, and display a rainbow-like effect as the viewing angle changes.

The mood board evokes a whimsical, dreamlike atmosphere, featuring shimmering lights, delicate wings (like those of butterflies or dragonflies), mirrored surfaces, and color-shifting fabrics with holographic effects.

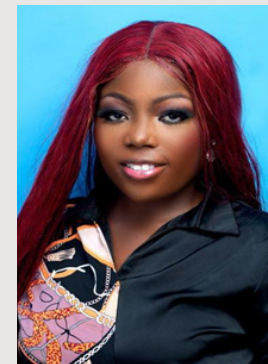
DESIGNERS



Abena Duoduwa Dodd

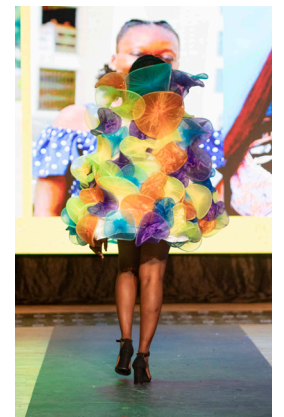
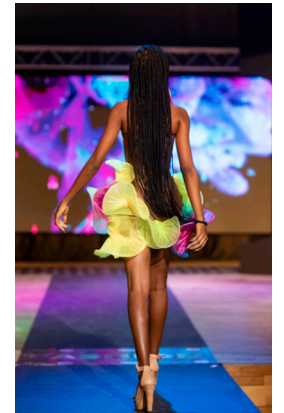
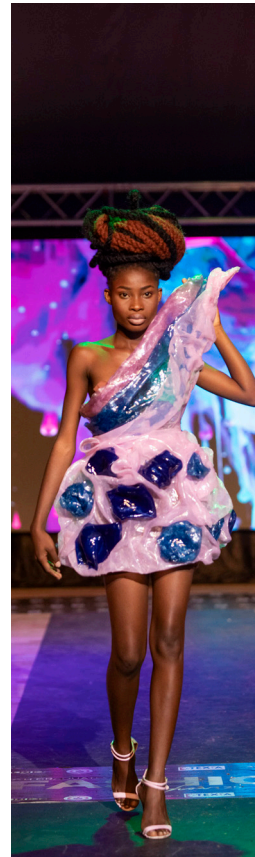
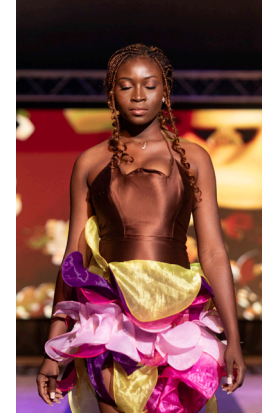


Sarah Osei



Ruth Acquah Gyamfi

ridescendo





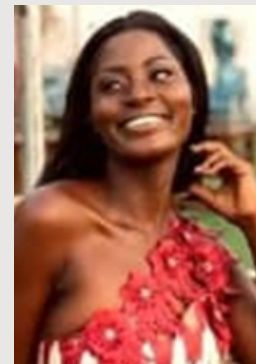
Nature's Diversity

This collection embodies an organic fusion of wilderness and luxury. Drawing from the vivid colors, textures, and forms of the natural world, it translates untamed beauty into sophisticated high-fashion. Each design balances the raw essence of nature with elegant, contemporary silhouettes.

DESIGNERS



Theophilus Kumi

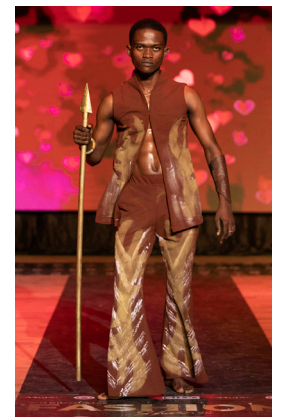
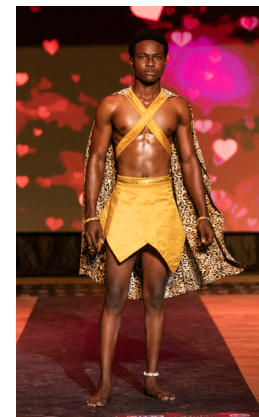
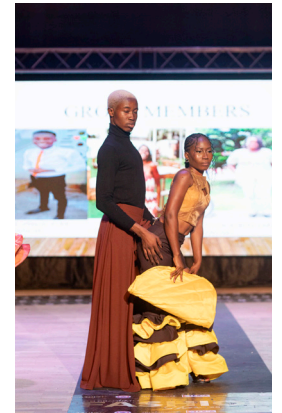
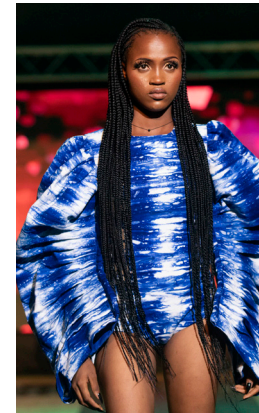
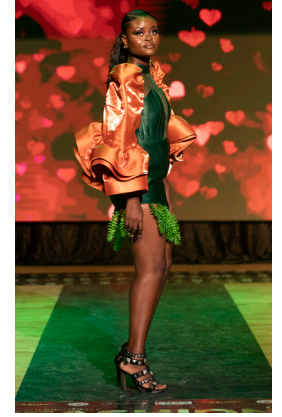
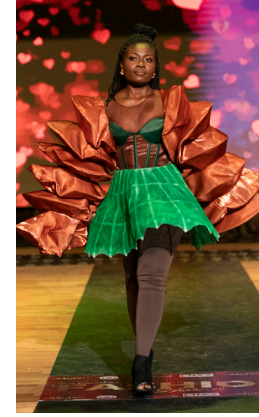
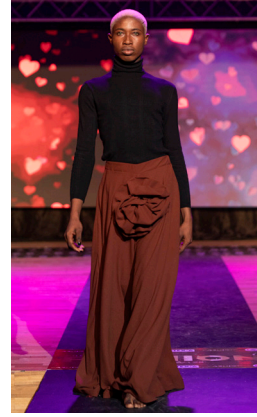
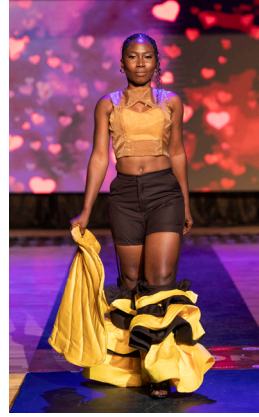


Xorlali Akose Gbeve



Liticia Asiedu-Larbi

Nature's Diversity





Beaded Blaze

The beaded blaze mood board draws inspiration from the scarlet macaw's fiery spirit, the sunflower's radiant warmth, and the rich tradition of beading. Together, these elements form the foundation for a fashion collection that embodies hope, strength, resilience, and creativity.

DESIGNERS



Beniser Borquaye



Janet Gyakyie



Dwamena Eva Oforiwaa

Beaded Blaze

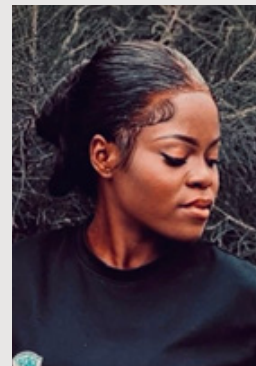




Tidal Denim

Draws inspiration from the ocean's rhythmic dance. This collection captures the sea's serene power through a palette of deep blues, vibrant turquoises, and soft whites. Celebrating the rugged soul of the sea, each piece merges the ocean's raw force with denim's durable spirit, for those who carry the wild within their everyday style.

DESIGNERS



Affrane Janet

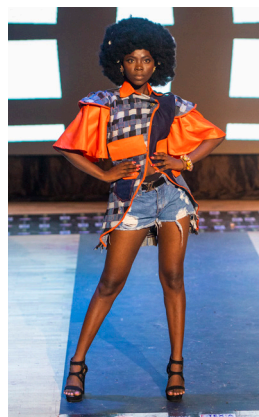


David Ansah Bekoe



Diana Dadzie

Tidal Dolm



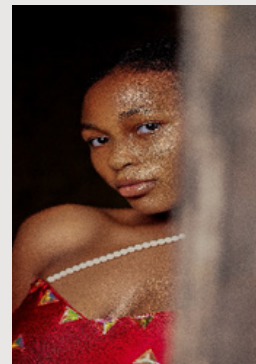


Divulgence

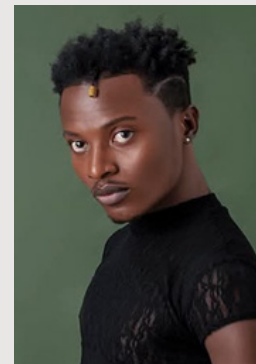
This collection draws inspiration from the peafowl, a creature that embodies the audacity to reveal its full splendor without apology. Through fashion, we translate this vibrant display into a language of self-discovery, blending opulent colors, flowing forms, and delicate feather motifs.

Divulgence is an ode to the strength it takes to be truly seen, encouraging each wearer to unveil their own unique beauty and walk through the world with confidence and grace.

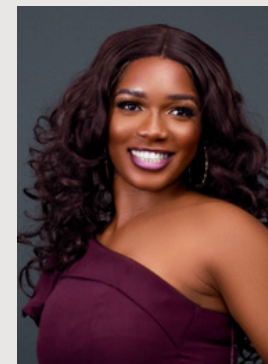
DESIGNERS



Gifty Etornam

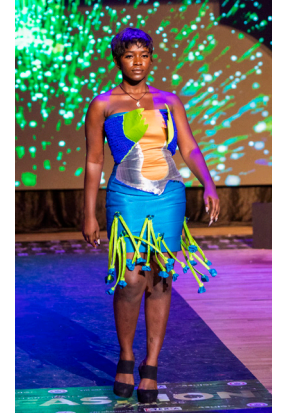


Jude Kingsley Aryeetey



Rena Adom Botchwey

Oivlogence





Seductive Plumage

Is a celebration of fierce femininity and untamed glamour. It is an ode to the power of adornment, where deep, resonant hues and intricate textures speak in a whisper with every movement. This is more than fashion; it is a ritual of self-possession, dressed in satin, shadow, and the promise of flight.

Drawing inspiration from the avian world, the style embraces vibrant color, detailed patterns, and luxurious textures that mimic nature's most exquisite feathers. At its heart, it is a bold declaration of individuality and personal flair.

DESIGNERS



Augustina Dzimador

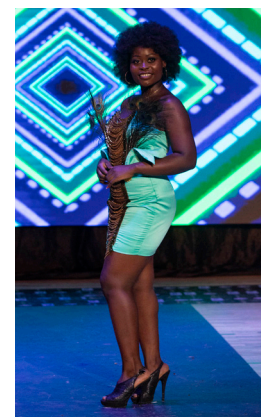
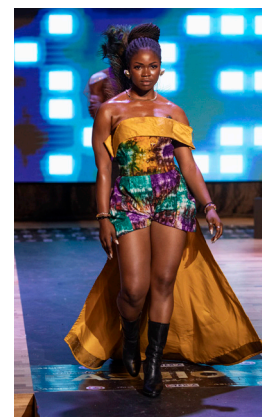
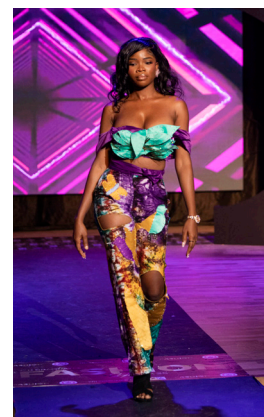
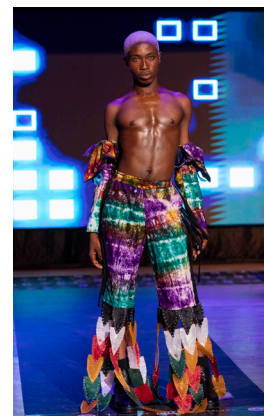
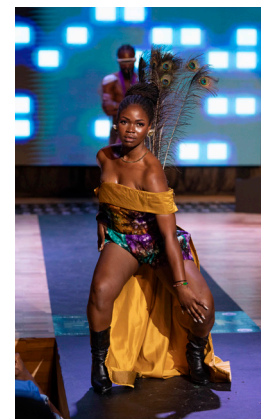
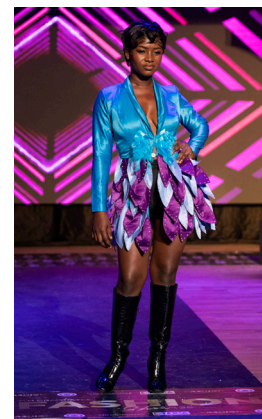


Innocentia Tawiah



Edith Oyo Quarety

Seductive Plumage

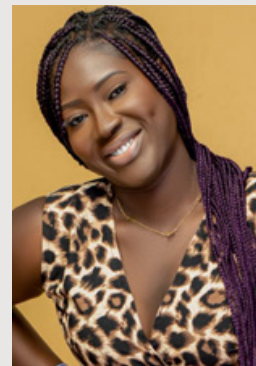




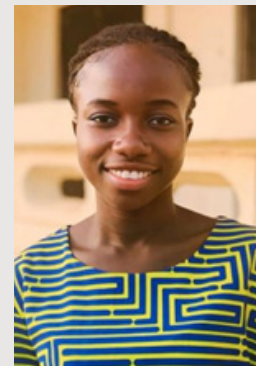
Cosmic Odyssey

Embark on a celestial style journey. Our collection features ethereal silhouettes, fabrics in shifting galaxy hues, and iridescent finishes, all accented with astral details for a look that is truly out of this world.

DESIGNERS



Regina Faabaw

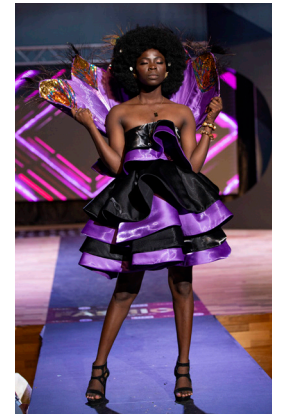
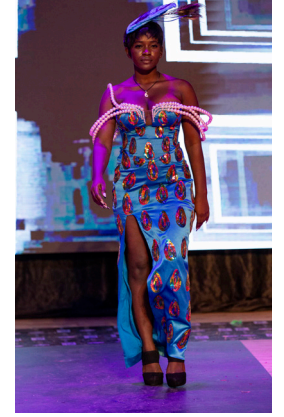
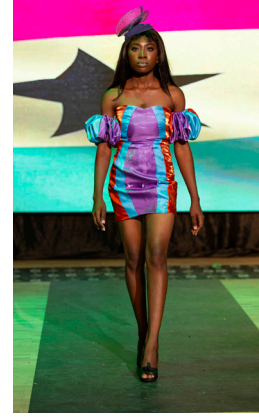


Oswell Mawunya Afenyoh



Grace Agani

Cosmic DAYS





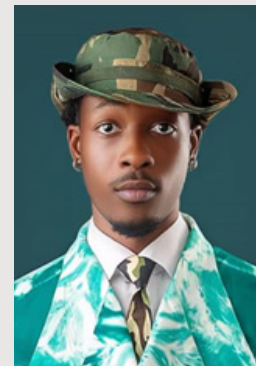
Ocean Abyss

Better Dream explores the hidden world of the deep. Inspired by the silent strength of the abyss and the fierce elegance of the Betta fish, this collection captures the ocean's untamed spirit. Featuring flowing silhouettes, fin-like flares, and iridescent textures in gradients of blue, purple, and pink, each piece is a tribute to the resilience, beauty, and vibrant mystery of the deep.

DESIGNERS



Belinda Afi Beckley

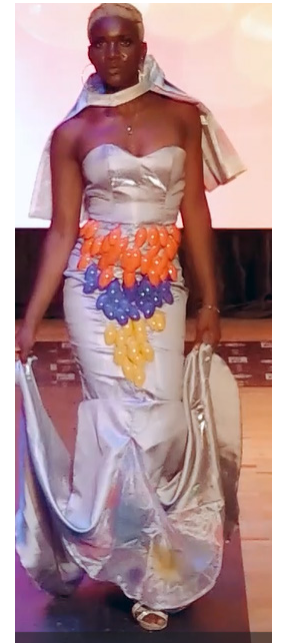
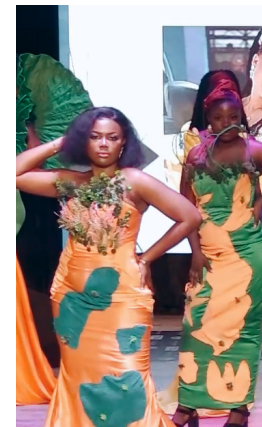
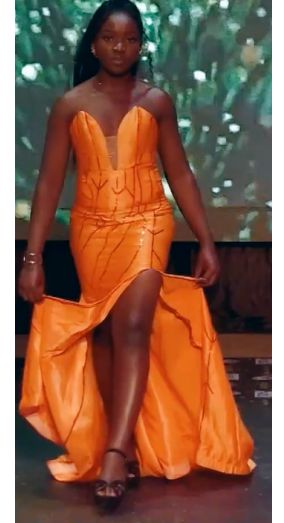
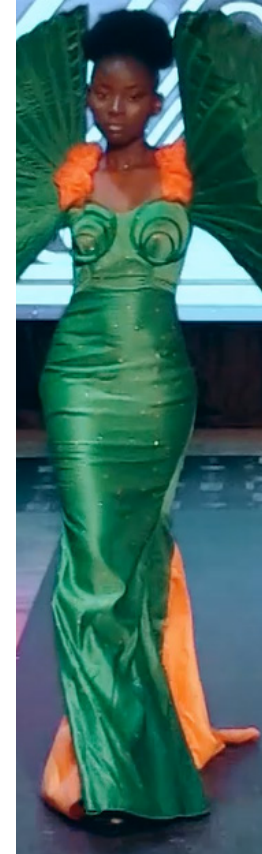


Amankona Lauson Jnr.



Haah Adusei

Aloves Ocean

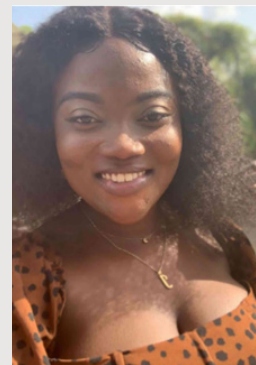




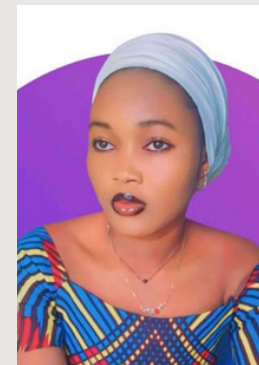
Vibrant Hope And Whimzy

A whimsical past meets a radiant future. Our theme celebrates the playful elegance of Candy Corn Crocuses, full of hope and nostalgia, contrasted with the bold, futuristic energy of Neon Glue Blooms. It's a vibrant fusion of whimsy and wonder.

DESIGNERS



Osei Yeboah Natalie

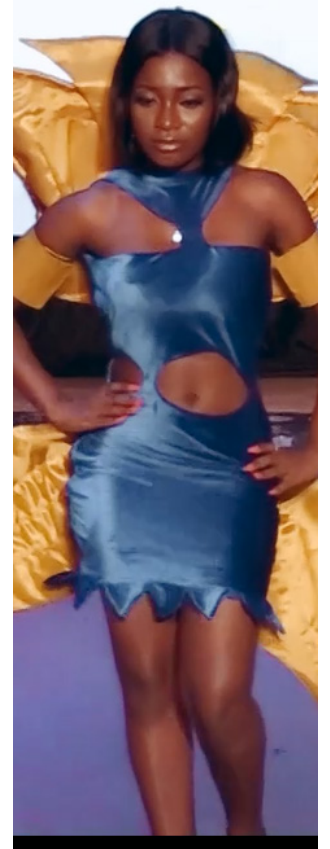
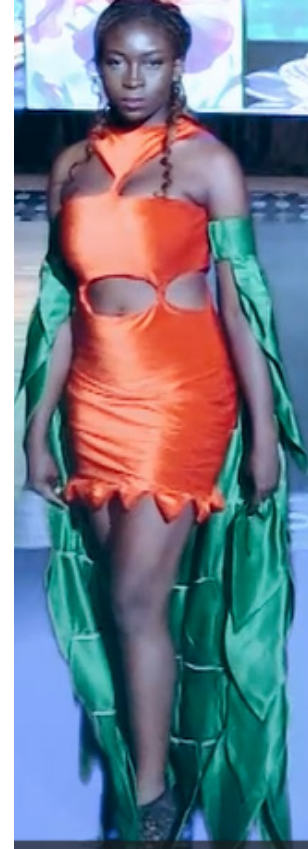
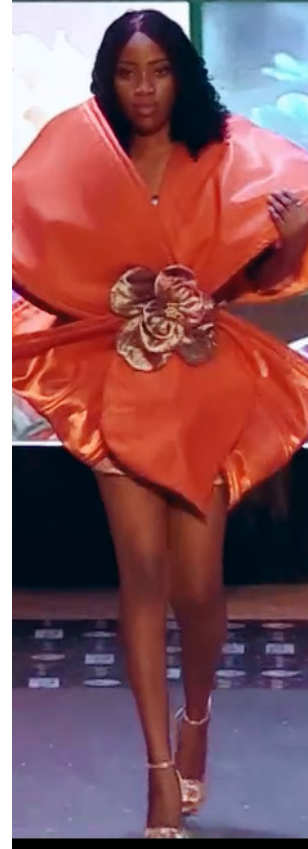


Alale Eunice Akukua



Alidu Faiza

• Vibrant Hope & **WILLZA**





Night of Shells

Celebrates the quiet power of nature, the pride of heritage, and the eternal allure of the sea. Our collection pays homage to the shell's profound symbolism in African culture, a legacy of adornment, spirit, and story.

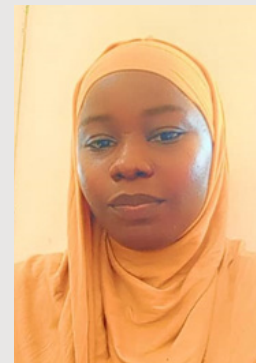
We capture the mystery of the midnight ocean: garments shimmer with the tide, while cowries and shells are embedded as emblems of wealth, femininity, and ancestral strength.

Earthy tones and metallic accents merge in silhouettes that flow like waves, uniting tradition with modern elegance. Wear this collection not just as clothing, but as an armor of confidence, culture, and the profound beauty shaped by the natural world.

DESIGNERS



Effah Fremphah Mavis

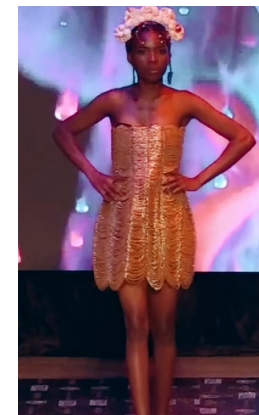
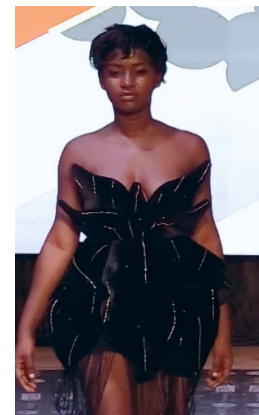
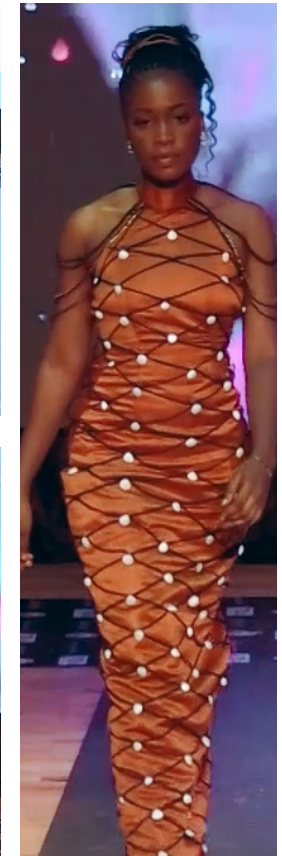
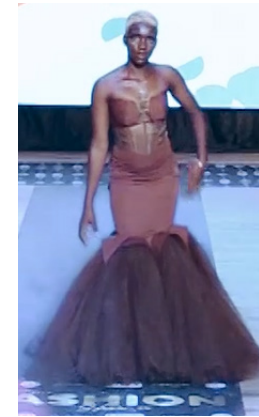
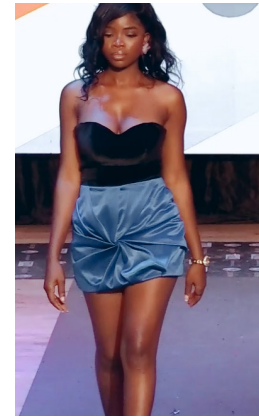


Abubakari Zuweira



Amankwa Ernest

Night of FASHION





Ocean Oasis

Discover Oceanic Oasis, where the rhythm of the sea meets the serenity of the mountains. This unique convergence creates a captivating landscape, both soothing and revitalizing. Our world is brought to life through a bold palette of vibrant orange, deep violet, and brilliant turquoise blue.

DESIGNERS



Eunice Davis

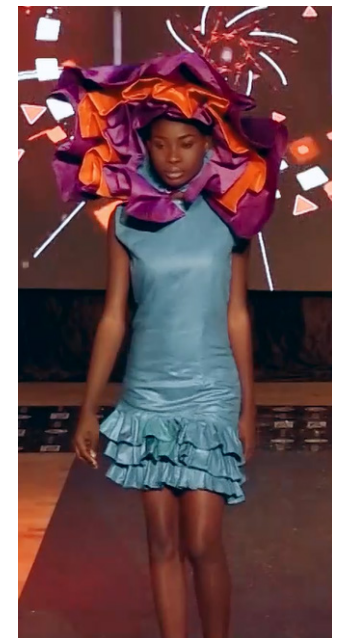
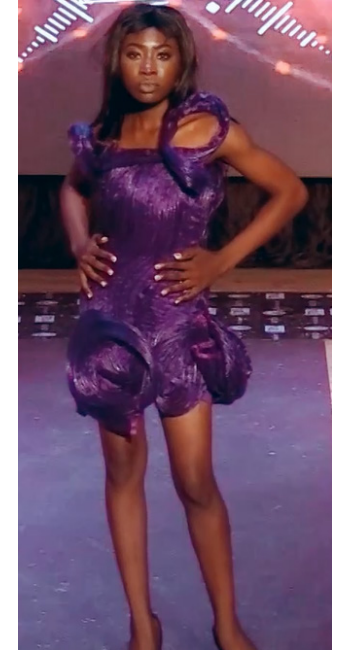
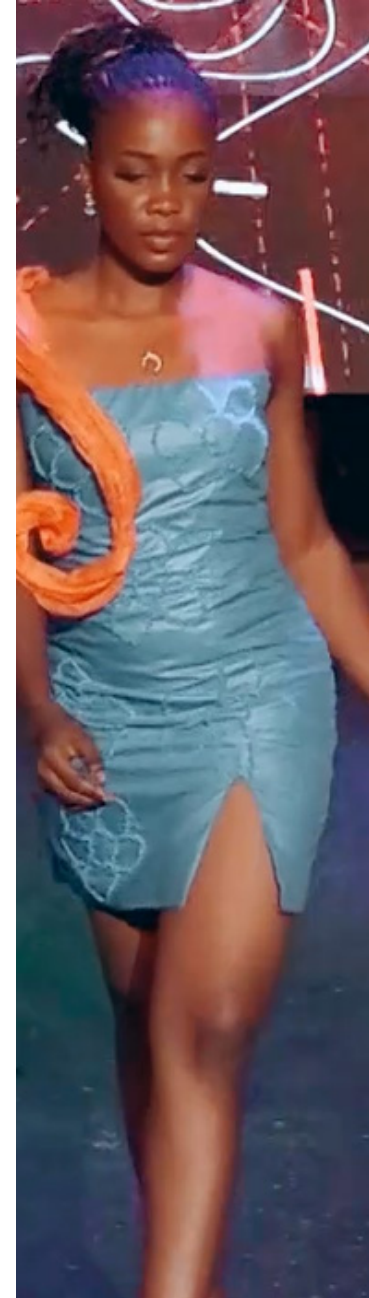


Gifty Teye



Anaba Atambire

Ocean • Artists





Enchanted Clouds

Enchanted clouds is a fashion theme that merges delicate fantasy with contemporary wearability. Drawing inspiration from celestial moods and ephemeral weather, morning mist, drifting fog, and twilight skies, the collection explores weightlessness and light through fluid silhouettes, airy fabrics, and a soft pastel palette.

Each piece is designed to evoke a sense of poetic escape, blending surreal, weather-inspired forms with a tangible sense of softness and mystery. The result is a body of work that feels both emotionally resonant and elevated, as if the wearer is wrapped in a dream.

DESIGNERS



Nyarko Rita Angmorkwor

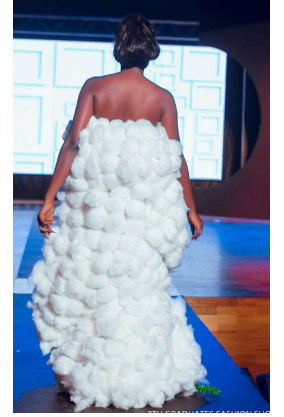
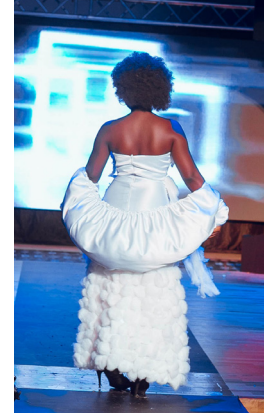


Georgina Authur Kenedy



Agubrestu Cynthia
Enyonam

Enchanted





Elemental Oasis

Draws inspiration from the raw beauty and symbiotic relationships of the natural world. Our collection weaves together animal prints, verdant botanicals, and elemental motifs, celebrating the delicate balance between earth, water, fire, and all living creatures. Discover jewelry that embodies the harmony of nature.

DESIGNERS



Sandra A. Nyan

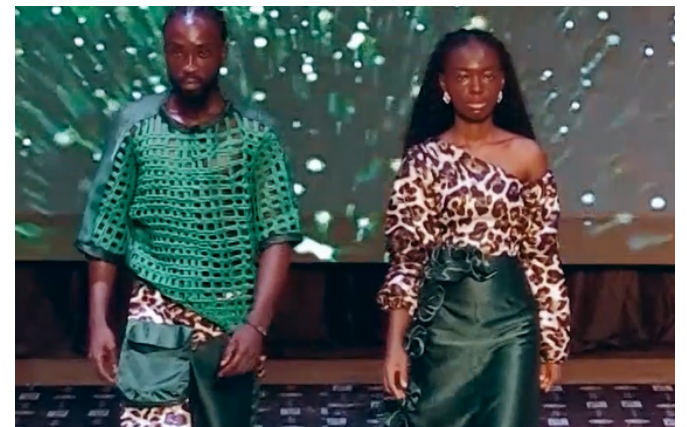
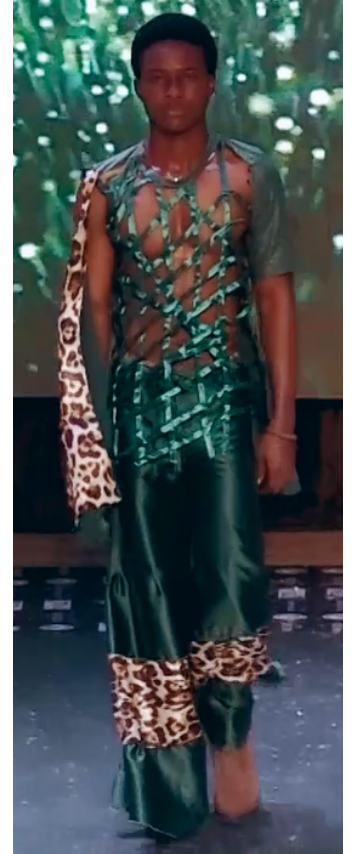
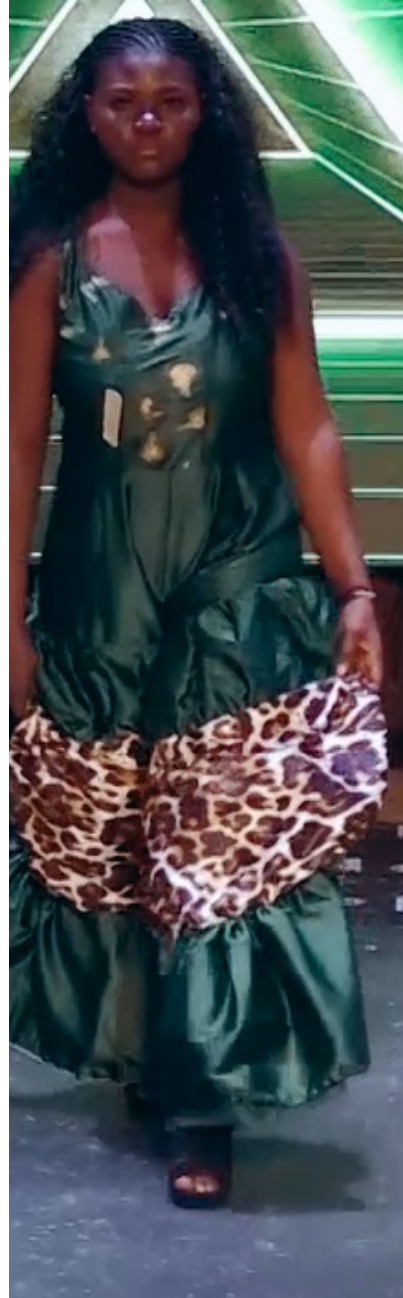


Priscilla Akos Ewli



Ofori Miriam Yawa

Elemental: Q&A





Urban Revival

Urban refers to the city, and REVIVAL signifies a renewal or rebirth. Our urban revival collection captures this essence by transforming the landscape of city life and fashion itself. In response to the high cost of living and the environmental toll of fast fashion, which is depleting our planet and crippling local textile industries in Ghana, we propose a sustainable solution.

This collection will consist of timeless, upcycled garments crafted from discarded materials, with a focus on denim. By creatively reusing textiles, we aim to reduce waste and breathe new life into forgotten clothing, starting with the iconic "Obroni w'awu."

DESIGNERS

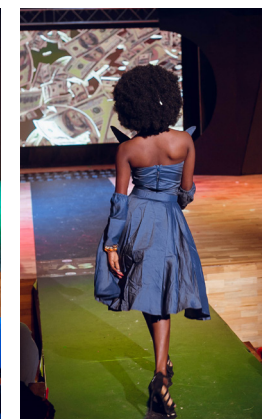
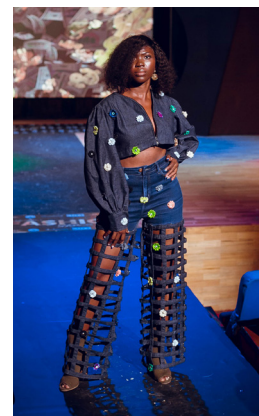
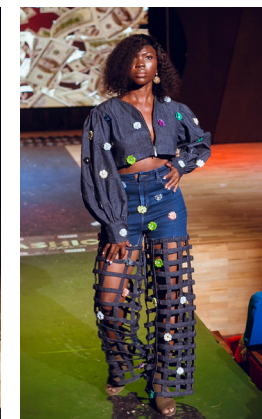


David Nanor



Doris Tutor

Urban Cavaliers





REFLECTIONS ON THE FASHION SHOW

What the Writers say ...



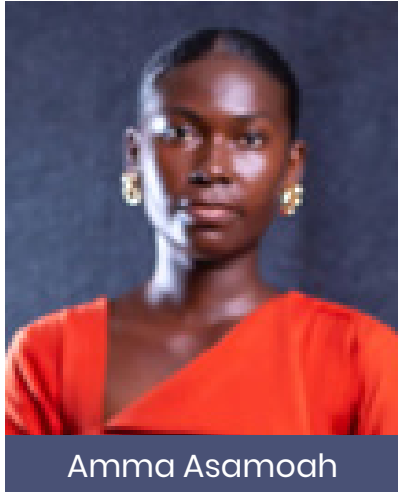
Ahadjie Korbla Gershon

The Nexus collection opens not with a garment, but with a manifesto. A model emerges in a cascade of magenta and purple, a palette chosen for its deep resonance with creativity and unity. The heart of the look is an iridescent organza overlay, a sheer, flowing shell that captures and refracts light with every step, visualizing the very transfer of energy and the forging of connection. Voluminous sleeves and a sculpted front knot act as both literal and symbolic ties, binding the ensemble to its theme of interlinked forms. Beneath, a sleek satin slip dress provides an anchor of elegant continuity. This dialogue between the structured base and the ethereal outer layer is the collection's central thesis: that individual elements, when connected, create a profound and greater whole. Anchored by bold black heels, the look is a masterclass in modern sophistication, positioning Nexus as a living, breathing philosophy on the runway.

Then, a shift in energy. Furiosa storms the catwalk with a primal, unapologetic roar, channeling the spirit of the unbroken African warrior. This is fashion as armor, built on a foundation of strength and resilience. Leopard prints, a deliberate homage to the fearlessness of the wild, dominate, while sharp spikes and metallic accents transform fabric into a second skin of defense. The silhouettes are architectural and commanding, featuring warrior-like shields and powerful, defined shoulders that grant each model an indomitable stance. The aesthetic is fiercely raw, a defiant balance between nature's untamed ferocity and human ingenuity. "Furiosa" is more than clothing; it is a declaration of survival, a narrative of battles fought and strength unbroken.

From this raw power, we journey to the polished world of the Global Nomad, a collection that celebrates the modern citizen as a curator of culture. It reimagines the suit as a passport for the style-conscious traveler, a versatile uniform for a life in motion. Tailoring is explored in its full spectrum: from rigorous formal cuts to relaxed, deconstructed separates. Bold colors and striking patterns redefine the classic silhouette, making it a unisex symbol of confidence and freedom. This collection speaks to a generation that is as comfortable in a boardroom in Milan as they are at a casual meet-up in Marrakech, embodying an elegance that knows no borders.

We are grounded by Nature's Loom, a collection that draws its quiet power from the earth itself. Dominated by lush, verdant greens, it mirrors the serene yet captivating beauty of the natural world. The designers championed sophistication through simplicity, allowing exquisite woven patterns to be the heroes of each garment. These intricate textures provide depth and a tactile richness, creating a harmonious balance that whispers rather than shouts. It is a poignant reminder that true, lasting elegance is often found in the effortless grace of the world around us.



Amma Asamoah

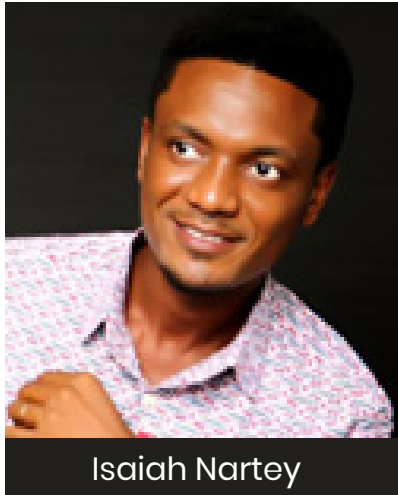
The University of Education, Winneba (Central Campus) transformed its runway into a powerful narrative of rebirth with its graduate showcase, *Creating Legacy from Disruption*. This compelling theme was masterfully interpreted through four distinct collections: *Elemental Wilderness*, *Arctoris (Rainbow)*, *Nature's Elegance*, and *Nature's Diversity*. Each sub-theme was not merely a display of garments, but a profound statement on beauty forged from chaos, leaving an indelible mark on the audience.

The evening commenced with *Elemental Wilderness*, a collection that championed raw, untamed power. Designers conjured a world where chaos and beauty coexist, with textures echoing cracked earth and embers. Asymmetrical cuts and deliberately torn fabrics in a palette of burnt umber, fiery crimson, and deep moss green spoke of disruption, while rugged leather and wooden adornments hinted at a primal harmony. This was followed by the unapologetic joy of *Arctoris*, a burst of pure spectral energy. The runway ignited with flowing

gowns and sharp tailoring in a gradient of prismatic colour. Through shimmering fabrics and intricate beadwork that captured the light, this collection was a sartorial promise of hope and unity after the storm.

A moment of serene sophistication arrived with *Nature's Elegance*, a study in refined subtlety. Drawing inspiration from spiderwebs, petals, and woven fronds, the designs floated down the runway in whispers of chiffon, silk, and delicate lace. A palette of soft lavender and sage green dominated, with exquisite bead embellishment tracing patterns like morning dew. Standout pieces included a floor-length gown with a forestry-inspired flare and a whimsical, woven off-shoulder dress that celebrated structure and flow. The finale, *Nature's Diversity*, was a vibrant ode to the planet's rich ecosystems. This was fashion as a global expedition, featuring bold animal prints, layered textures, and colours ranging from emerald green to oceanic blue. Avant-garde creations stood out, such as a gown burgeoning with sculpted floral forms and a sophisticated two-piece ensemble with a harmoniously blended, patterned skirt.

In its entirety, the UEW show was a testament to fashion's highest purpose: storytelling. These emerging talents demonstrated that from the fractures of disruption, the most beautiful and resilient legacies are born. The department has not only set a new benchmark but has unequivocally proven that the future of Ghanaian design is breathtakingly bright.



Isaiah Nartey

This is where heritage ignites. Beaded Blaze is a theme of glorious contradiction: the meticulous, timeless craft of beadwork collides with the untamed spirit of fire. Each bead is an ember, each garment a conflagration of elegance and power. It is fashion that is simultaneously grounded in tradition and explosively forward-looking, speaking to a wearer whose confidence is both radiant and resilient. The collection manifests in flowing silks that mimic licks of flame, anchored by rich velvets serving as canvases for dense, luminous beadwork. A colour story of deep crimson, molten gold, and shimmering amber is cut with the cool respite of ash grey and pearl white, creating a visual heat that is impossible to ignore.

Drawing from the eternal rhythm of the ocean, Tidal Denim explores the soul of a universal fabric. This theme is a study in fluid strength and cyclical renewal, denim as both a force of nature and a second skin. Silhouettes mirror the sea's duality, from structured, tailored blazers that echo crashing waves to soft, draped skirts that flow like a receding tide. The palette

is drawn from the depths: indigo midnights, sun-bleached shallows, and the stark white of sea foam. Championing sustainability through artisanal patchwork and dye techniques, this collection proves that denim, like the tide, is forever changing, yet eternally essential.

Fashion becomes an act of courage in Divulgence. This theme is a powerful exploration of the self, masterfully playing the line between the concealed and the revealed. It is about the deliberate, controlled unveiling of identity, a sartorial confession. Garments are architectural and guarded, then fluid and transparent. Sharp tailoring gives way to cascading drapery; heavy wools are layered over sheer meshes, creating a narrative of peeling back layers to expose a hidden truth. The colour journey moves from the mystery of black and midnight blue to the exposed clarity of ivory and silver. Here, a zipper is not merely a fastening, but an invitation to disclose.

Seductive Plumage is an unapologetic celebration of allure, a maximalist manifesto inspired by the avian world's most captivating displays. This is not mere ornamentation; it is the fashion of attraction and power. Silhouettes are daring and dramatic, gowns with sweeping trains that mimic a peacock's grand display, and sharp tailoring punctuated with feathered lapels. A symphony of texture unfolds in feather-light chiffons, rich velvets, and intricate appliqués, while a colour palette of jewel-toned emerald, ruby, and iridescent gold commands attention. This collection empowers the wearer to embrace their most captivating self, transforming clothing into a performance of pure, confident seduction.



Agyemang Akwasi Thomas

MODEL SPOTLIGHT



Betty's runway presentation masterfully escalates the theme of Creating Legacy from Disruption through a silhouette of calculated contrasts. The ensemble pairs sharply tailored shorts with a dramatic, A-line tunic that flares from the shoulders. This interplay of structure and volume creates a powerful, statement-making shape that commands the space. The theme is most acutely realized in the materiality: the tunic is crafted from dark, repurposed denim, its familiar form subverted into an elegant, flowing jacket. This clever disruption of a classic fabric challenges convention and anchors the collection's narrative. Styling remains intentionally focused to let the design speak. A direct model gaze and confident stance amplify the garment's inherent empowerment, while minimalist black heels and artfully disheveled hair ensure all attention is drawn to the architectural lines of the piece.

On the runway, Elijah commanded attention in an avant-garde design that served as both a sanctuary for the body and a statement of sophisticated glamour. The collection draws direct inspiration from the serene, ancient beauty of Ghana's Larabanga Mosque. We see this in the garment's intricate embellishments, echoing the mosque's magnificent architecture, and in a colour palette that harmonizes like a quiet emblem of peace and power. A sharp black lapel grounds the look, complementing the model's innate strength, while the meticulous shades and ornaments testify to the designer's impeccable high-fashion sensibility. This season, the runways are whispering tales of faraway lands, and this look, channeling the earthy finesse of one of West Africa's oldest wonders, is one of the most compelling narratives to unfold.

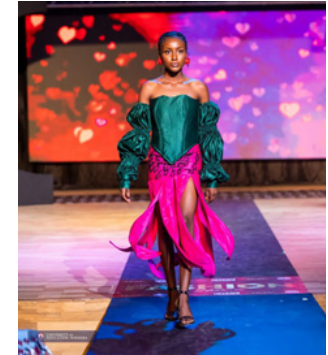


The collection featured a standout look that married structure with soulful expression. The foundation was a bluish-seal gown, its fabric cinched precisely at the waist before flowing into a skirt with a functional slit. Artisan-inspired sleeves drew the eye to the hands, while deliberate injections of a bohemian brown palette provided warmth and texture. The pièce de résistance was a fascinator that embodied both stability and modern elegance, completing a vision of serene authority. This was Akania's atypical genius on full display: intelligent, crafted, and utterly captivating.



A touch of simplicity helps us comprehend life's necessities, a philosophy brought to stunning life by Coker's latest collection. The standout piece was a study in poise, reaching what felt like an unattainable sartorial echelon. The cap sleeve graced the apparel with its clean lines, while the hem told a more complex story. Here, green and yellow entangled like a spider's intricate web, unraveling a narrative of tenacity and artistry. The colors, a peaceful homage to nature, whispered of peace and wealth. Completing the scene was the model herself, her eyes echoing with a sassiness that perfectly suited the gown's ethereal beauty, making this moment the fashion show's crowning achievement.

In a striking synthesis of structure and sensuality, Judith embodies modern glamour. Her look features a long-sleeved emerald corset that artfully highlights the décolletage, while a blush pink skirt, adorned with multiple slits and a delicate floral pattern, adds a touch of soft, dynamic movement. The color story speaks volumes: emerald green whispers harmony, while the pink hue evokes a profound emotional resonance. Framed by tendril braids and flawless makeup, the entire ensemble is a testament to charm, splendor, and undeniable power.

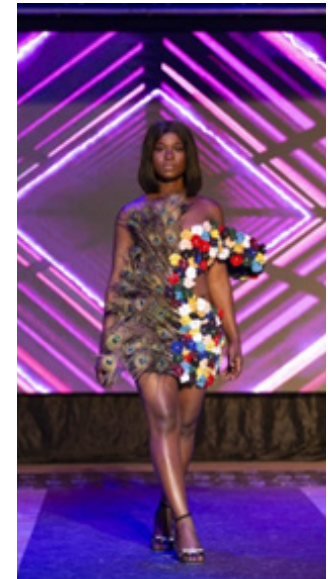


Electrifying the runway, this emerald gown is a study in exquisite contradiction. Its vibrant hue calls to mind the untamed beauty of nature, while the architecture of the dress itself tells a more complex story. A lustrous satin bodice gives way to a spectacular crescendo of voluminous organza ruffles at the sleeves. This brilliant tension between structure and whimsy, polish and disruption, is nothing short of sartorial genius.



Elizabeth's runway presentation delivered a masterclass in modern sophistication. The collection's standout piece was a brilliant white dress that seamlessly fused classic structure with contemporary edge, creating a look of pure, powerful elegance. The design is a compelling study in contrasts. A tailored linen bodice, featuring a distinctive neckline and precise seaming, gives way to a soft, A-line skirt. Delicate, long lace sleeves, their intricate patterns and subtle transparency offering a glimpse of skin, balance the bodice's clean lines, adding a touch of feminine allure. A bold, graphic yellow floral appliqué erupts on the skirt, a playful disruption to the monochromatic palette. This whimsical detail is anchored by a sharp zig-zag seam that defines the waist, emphasizing the garment's impeccable proportion. The true pièce de résistance, however, is the architectural fascinator. More sculpture than accessory, its wide, flat brim and stark lines frame the face with dramatic effect. The piece commands attention, merging a futuristic sensibility with a nod to classic millinery through its strategic use of netting. The contrast between the solid brim and the delicate veil is a study in refined chic. Styled with simple, refined braids, the overall silhouette is a striking statement of modern polish and artistic audacity.

This captivating design transcended fashion, pushing into the realm of wearable art. It presented a bold statement on the dialogue between organic beauty and human imagination. The masterpiece was defined by its striking asymmetry. One side of the garment was a tribute to nature's opulence, adorned with iridescent peacock feathers that cascaded down the model's frame. Their intricate patterns and shifting hues created a sense of fluid, organic movement, while their strategic placement sculpted the body with dramatic effect. In deliberate contrast, the opposing side erupted in a profusion of whimsical, almost cartoonish flowers. Crafted from synthetic materials like felt and foam, their vibrant colors and playful arrangement celebrated the artificial. This clever juxtaposition of the natural feather and the man-made bloom explored our complex relationship with the environment and the impact of creative intervention. Rendered in a fitted mini-dress silhouette, the design allowed its extraordinary textures to command attention. The abbreviated length provided a modern edge, focusing the eye on the compelling tension between its two halves. The result was a daring and unforgettable statement, a testament to fashion's power to provoke thought and redefine convention.





On the runway, Emelia and Sedem presented a powerful dialogue in shades of red, where classic elegance met contemporary boldness in a harmonious duet. Emelia's gown is a masterful reinterpretation of tradition. Crafted from a deep crimson velvet, the plush fabric drapes into a fluid silhouette that exudes pure luxury. An off-the-shoulder neckline, adorned with delicate beadwork, frames the bodice. Here, a striking contrast emerges: vertical rows of white beading create a structured focal point, lending modern graphic appeal to the soft, romantic form. In counterpoint, Sedem's ensemble makes a sharp, modern statement. His streamlined crepe suit offers a clean canvas for a cascade of red floral appliqués. Meticulously crafted from the same velvet as Emelia's dress, these blooms introduce texture and whimsy, creating a tangible bridge between the two looks. The choice of a less-draping fabric sharpens the silhouette, allowing the bold placement of the florals to command attention. Together, their ensembles weave a cohesive narrative. This is a study in the versatility of a single, potent color, proving its power to convey both timeless sophistication and daring modernity through the alchemy of fabric and form.



LECTURERS ON THE RUNWAY







Programmes Offered

UNDERGRADUATE PROGRAMME

Diploma in Textiles and Fashion
Bachelor of Art (Fashion and Textiles Education)
Bachelor of Education in Fashion and Textiles

POSTGRADUATE PROGRAMME

Master of Philosophy in Textiles and Fashion Education



University of
Education, Winneba

www.uew.edu.gh

Department of
Textiles & Fashion Education